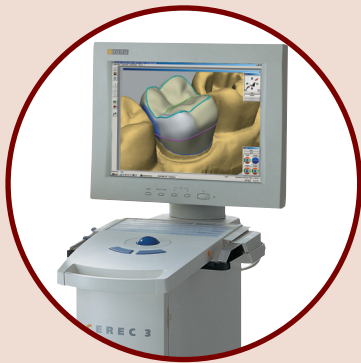




Get into the *future of* Dentistry with Patterson



CEREC® 3D

Lets you complete a ceramic restoration in one visit.

- Beautiful results
- Restorations in three dimensions
- No more messy impressions and "silver" fillings
- Minimal invasion to healthy part of the tooth

You've got to see it to believe it!



Patterson EagleSoft Software

Practice management, clinical and imaging software.

- Easy-to-use, detailed scheduler with flexibility
- Total eBusiness solution: eClaims and eStatements
- Direct, seamless integration with more leading digital solutions
- The ability to check claim status and patient eligibility on demand
- All your front office, clinical and imaging procedures right at your fingertips – in one patient record



CDR® – Schick Technologies Digital Wireless X-ray System

Real-time images available right in the operator.

- Unlimited positioning
- Excellent diagnostic full-mouth series every time
- Less radiation and a better experience for patients
- Razor-sharp clarity, with the ability to further enhance images



Atlanta Branch

1775 W. Oak Pkwy., Suite 500 • Marietta, GA 30062
1.800.752.5918 or 770.420.2324